

# automechanika

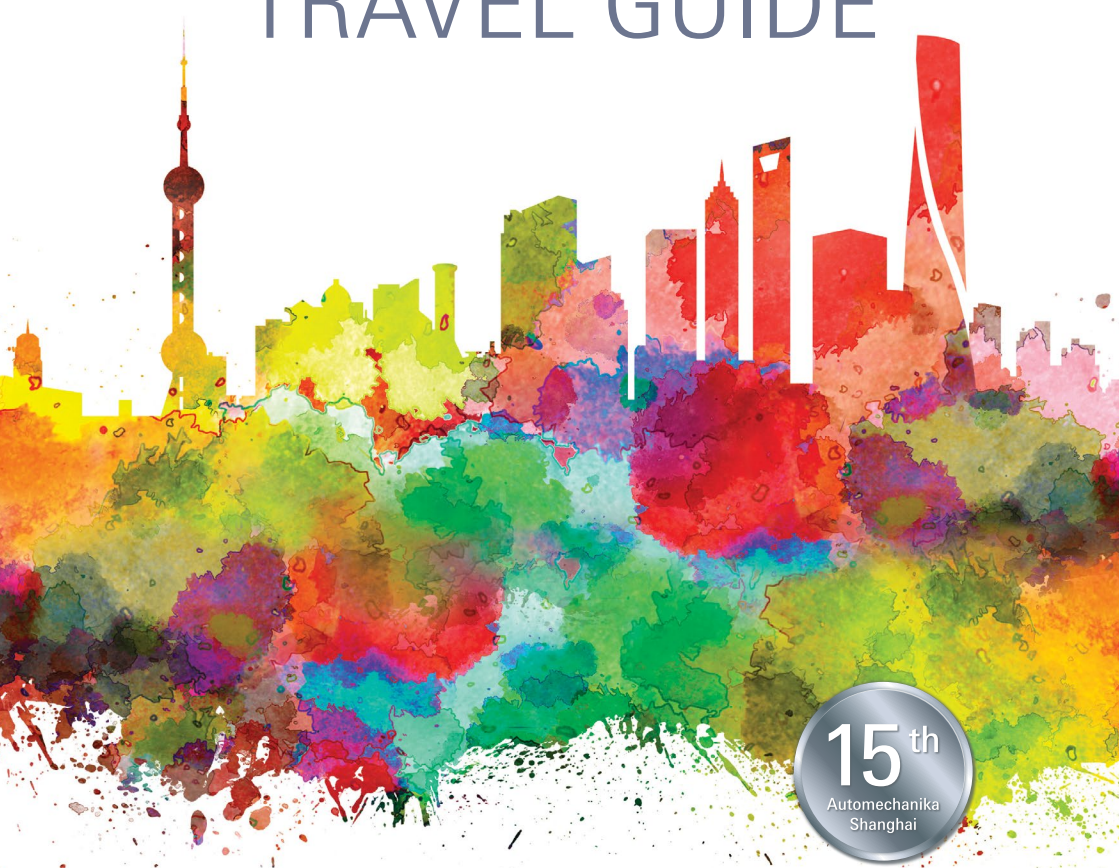
## SHANGHAI

Information as of September 2019

3 – 6.12.2019

National Exhibition & Convention Center (Shanghai), China

# TRAVEL GUIDE



messe frankfurt

# CONTENT

2	SHOW INFORMATION	
4	COMPREHENSIVE SERVICES	
6	TRANSPORT	
8	HOTEL	
10	ATTRACTIONS	
12	RESTAURANTS	
14	FOOD	
16	USEFUL INFORMATION	 你好吗? How are you



## 3 - 6 December 2019

**VENUE** **National Exhibition and Convention Center (Shanghai)**  
333 Songze Avenue, Shanghai, 201702, China  
Tel: +86 21 6700 8888  
Fax: +86 21 6700 8877  
Website: <http://en.cecsh.com/>

**WEBSITE** [www.automechanika-shanghai.com](http://www.automechanika-shanghai.com)

**EMAIL** [auto@hongkong.messefrankfurt.com](mailto:auto@hongkong.messefrankfurt.com)

**OPENING HOURS**  
3 - 5 December 9:00am - 5:00pm  
6 December 9:00am - 3:00pm

**ADMISSION** Only open to trade visitors.  
Persons aged under 18 are not admitted.

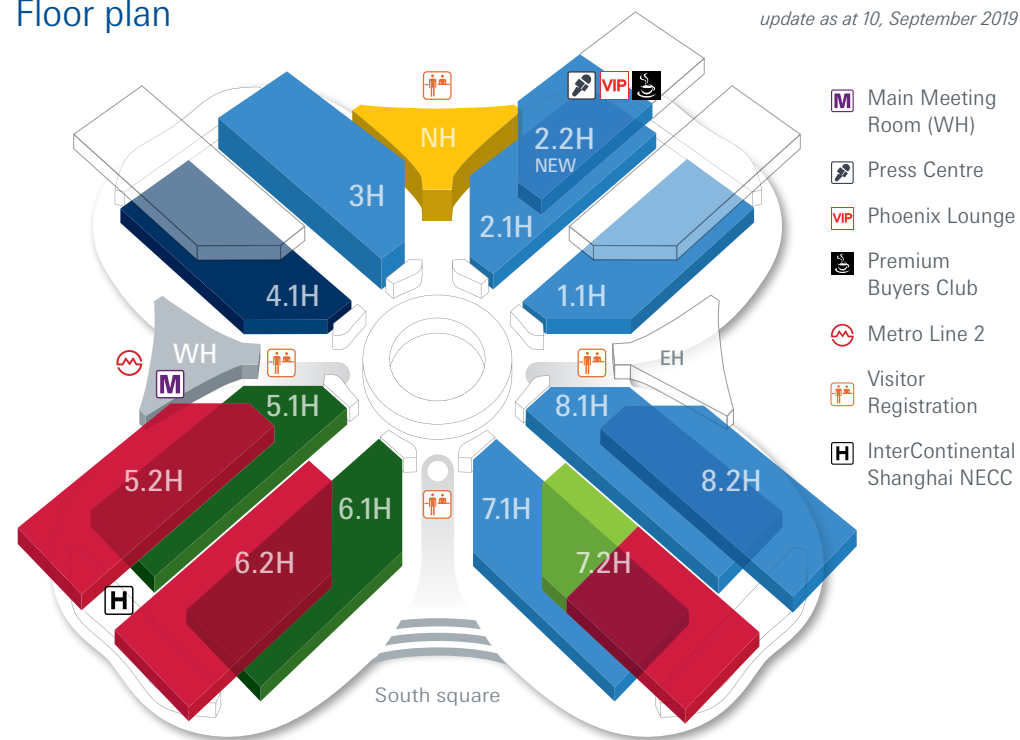
**ORGANISERS**  
**Messe Frankfurt (Shanghai) Co Ltd**  
Shanghai office:  
Tel: +86 400 613 8585  
Email: [auto@china.messefrankfurt.com](mailto:auto@china.messefrankfurt.com)


**Messe Frankfurt (HK) Ltd**  
Hong Kong office:  
Tel: +852 2802 7728  
Email: [auto@hongkong.messefrankfurt.com](mailto:auto@hongkong.messefrankfurt.com)

**China National Machinery Industry International Co Ltd**  
Tower A, No 3 Danling Street  
Haidian District, Beijing, 100080, China  
Tel: +86 10 8260 6772  
Email: [autosh@sinomachint.com](mailto:autosh@sinomachint.com)

## Floor plan

update as at 10, September 2019



- |   |   |  |
|---|---|--|
| <b>Parts &amp; Components</b><br>1.1H Country & Region Pavilions / Powertrain<br>2.1H Country & Region Pavilions<br><b>NEW</b> 2.2H Parts & Components<br>3H Parts & Components<br>7.1H Chassis / Body<br>8.1H Powertrain / Chassis / Air-conditioning<br>8.2H Parts & Components<br><b>Electronics &amp; Systems</b><br>4.1H Electronics & Systems | <b>Accessories</b><br>5.2H Car Care & Lubricants / Consumer Electronics / Accessories<br><b>Customising</b><br>6.2H Customising / Motorsport & High Performance<br>7.2H Vehicle Lighting<br><b>Repair &amp; Maintenance</b><br>5.1H Workshop & Diagnosis Equipment / Tools<br>6.1H Workshop Equipment / Body & Paint / Tools / Car Wash | <b>REIFEN (Tyres &amp; Wheels)</b><br>7.2H Tyres & Wheels / Rims <br><b>Tomorrow's Service &amp; Mobility</b><br>NH E-mobility / Connectivity / Lightweight / Mobility Services<br><b>Special zones</b><br>6.1H Auto Manufacturing Zone<br>7.2H Supply Chain & Chain Stores Zone<br>8.1H Remanufacturing Zone |
|---|---|--|



## BEFORE THE SHOW

### Free admission badge on hand

Feel tired of waiting a long queue at the fairground?

Pre-register online on or before 30 September 2019 to receive the admission badge by post before the show! You can bring along your badge for direct entry at the fairground.

→ [www.automechanika-shanghai.com/vor](http://www.automechanika-shanghai.com/vor)



### Exclusive flight discounts

Exclusive flight discounts are available for registered exhibitors, buyers and their travel companions with Cathy Pacific, Cathay Dragon and Lufthansa Group Partner Airlines to Shanghai.

→ [www.automechanika-shanghai.com/flight-discount](http://www.automechanika-shanghai.com/flight-discount)



### Online exhibitor searching system

Get yourself prepared prior to the show by locating targeted exhibitor booths and collecting complete supplier details.

→ [www.automechanika-shanghai.com/exhibitor](http://www.automechanika-shanghai.com/exhibitor)



### Visa application

All foreigners must obtain an entry visa before proceeding to China. You are strongly recommended to process the application one month before departure from the country of origin.

Our official travel agent provides assistance in getting the invitation letter for your visa application.

→ [www.automechanika-shanghai.com/visa](http://www.automechanika-shanghai.com/visa)



## DURING THE SHOW

- Free Wi-Fi will be available at the show venue
- For enquiries and assistance, simply look for Information Counter located at each hall and next to registration counter at East Hall, South Hall, West Hall and outside North Hall.



## AFTER THE SHOW



Pre-registered visitors who have arrived onsite can receive a free electronic official catalogue (Hard copy cost: RMB100) via the registered email. Register now and don't miss this benefit.



# TRANSPORT TO THE SHOW VENUE



## Metro

Take **Line 2** and get off at East Xujing Station (Exit 4 / 5 / 6)



## Bus

**Bus No. 865**  
Go to Shanghai Zoo (Line 10), Hongmei Road, Hongqiao Road (Line 10); Yishan Road, Hongmei Road (Line 9)

**Bus No. 706**  
Go to Jiuting Subway Station (Line 9)

**Bus No. 776**  
Go to Ziteng Rd (Line 10), Zhongshan Park (Line 2 / 3 / 4)

## Car

Come from Zhongshan Park → Changning Road → Beidi Elevated Road → Jiamin Elevated Road (Songze Road direction) → Songze Elevated Road (Shenhai Highway) → Panlong Road exit and turn around at the crossroad → Songze Road → Zhuguang Road

Come from Yanan Elevated Road → Huqingping Elevated Road → G50 → Jiamin Elevated Road (Songze road direction) → Songze Elevated Road (Shenhai Highway) → Panlong Road exit and turn around at the crossroad → Songze Road → Zhuguang Road

*\* Visitor registration counters are located at East Hall, South Hall, West Hall and outside North Hall.  
Car parking areas are available at North Hall and South Hall. You can also park your car at parking areas located near Exit 8 and 9 of East Xujing metro station. All parking is subject to the guideline of onsite guards.*

## Taxi

Please show the below venue address to the taxi driver:

请带我去  
国家会展中心 (上海)  
中国上海崧泽大道333号  
北大厅



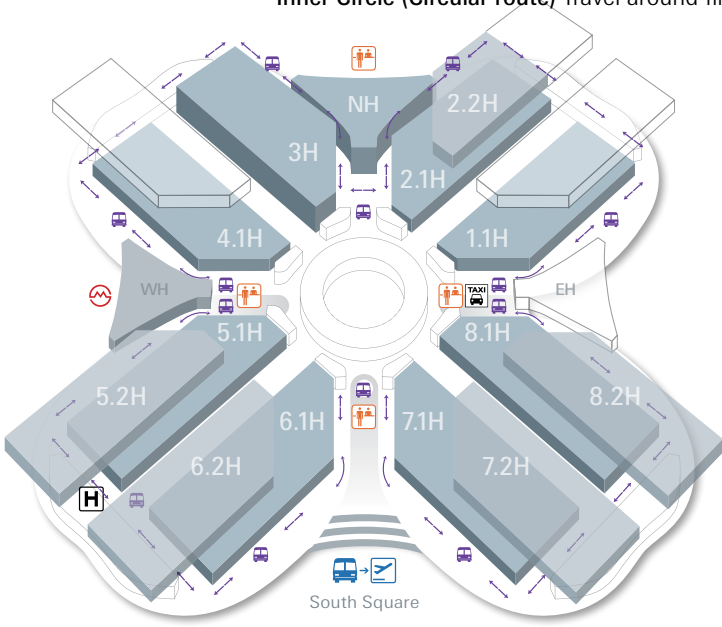
*\* The transportation fee listed here is just for reference and subject to real traffic conditions.*

Pudong International Airport ~60 km; ~RMB250; ~90 minutes  
Hongqiao International Airport ~3 km; ~RMB30; ~10 minutes  
Shanghai Hongqiao Railway Station ~3 km; ~RMB20; ~10 minutes  
Shanghai Railway Station ~24 km; ~RMB80; ~50 minutes  
Shanghai South Railway Station ~23 km; ~RMB80; ~40 minutes



## Shuttle bus (FREE!) at the fairground

**Inner Circle (Circular route)** Travel around first floor halls for show visit



- Shuttle Bus Stop
- Shuttle Bus to Hongqiao T2
- Metro Line 2
- TAXI
- Hotel
- Visitor Registration



# MOVE BEYOND TOMORROW

We'll keep you connected with the modern world,  
today and beyond.



## WHERE TO STAY IN SHANGHAI



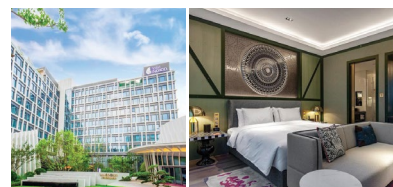
### Intercontinental Shanghai NECC

★★★★★

Located in the heart of Shanghai Hongqiao CBD, the hotel is the only luxury hotel in the dazzling National Exhibition and Convention Center (Shanghai). The hotel is just 8 kilometers from Hongqiao International Airport and adjacent to the Hongqiao transportation hub. It is also just steps away from Metro Line 2, which is connecting guests to all of Shanghai's commercial districts. The hotel features 536 contemporary guestrooms, four eclectic restaurants and lounges, a luxury spa and an indoor pool.

 1700 Zhu Guang Road, Shanghai

 5-minute walking to East Xujing Station of Line 2




### Hotel Indigo Shanghai Hongqiao

★★★★★

Discerning guests appreciate our convenient location at Hongqiao CBD, 0.8 Km from Hongqiao Railway station, close to NECC (Shanghai). Indigo presents Shanghai Hongqiao's neighborhood story with a new concept, and features 228 neighborhood style guest rooms with plenty of little touches, "Knolling" art deco in each guest room with different occupation; 400 square meters grand ball room and 4 multifunction meeting rooms to deliver a creative meeting concept; Indoor and outdoor gym plus a decent yoga room to bring you good health and endless energy.

 43 Lane, 188 Yonghong Road, Minhang District, Shanghai


 12-minute walking to Hongqiao Railway Station of Line 2/10/17




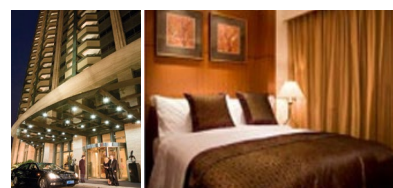
### Renaissance Yangtze Shanghai Hotel

★★★★★

Located in the heart of Hongqiao, Shanghai upscale business district, Renaissance Yangtze Shanghai Hotel is your home away from home. Be it for business or pleasure, the hotel offers an impressive array of first-class facilities and inventive catering solutions.

 2099 Yan'an Xi Road, Changning District, Shanghai

 10-minute walking to Yili Road Station of Line 10




### Grand Mercure Hongqiao Shanghai

★★★★★

The Hotel is located in the center of Shanghai's western Hongqiao District between stations on Shanghai Metro Lines 2 and 10. Guestrooms at the Grand Mercure offer microwaves, satellite flatscreen TVs, mini bars and in-room safes. In addition, all rooms come with fully-equipped kitchens or kitchenettes as well as balconies.

 369 Xianxia Road, Changning District, Shanghai

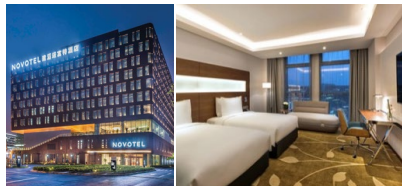
 15-minute walking to Loushanguan Road Station of Line 2



### Howard Johnson Hongqiao Airport Hotel ★★★★★

The hotel, located just opposite Hongqiao Int'l Airport Terminal 2, offers a range of rooms from singles to suites. Like the rest of the hotel, rooms are furnished and designed in a classy, yet modern fashion, updated with the latest amenities including free Wi-Fi.

📍 1989 Huaxiang Road, Qingpu District, Shanghai



### Novotel Shanghai Hongqiao ★★★★★

The hotel is located in the heart of Hongqiao Commerce area. It is within walking distance to Metro Line 2, National Exhibition and Convention Center, Hongqiao International Airport and Hongqiao Railway Station. It has 367 spacious guest rooms, 3 restaurants, 7 meeting rooms and fitness facilities. Perfect for business and leisure travelers.

📍 1102 Xiehe Road, Changning District, Shanghai

🚶 15-minute walking to Songhong Road Station of Line 2

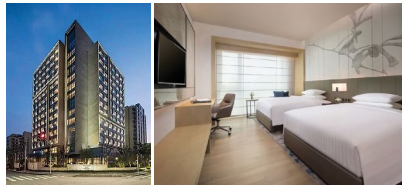


### Hyatt Place Shanghai Hongqiao CBD ★★★★★

Hyatt Place Shanghai Hongqiao CBD is an ultramodern 252-guestroom hotel providing ideal accommodation for anyone visiting Shanghai, whether for business or leisure.

📍 9 Shenhong Road, Minhang District, Shanghai

🚶 8-minute walking to Hongqiao Railway Station of Line 2, 10 and 17



### Courtyard by Marriott Hongqiao ★★★★★

The hotel is located in the heart of the Hongqiao Business District, across from the NECC. With 214 guest rooms equipped with modern décor and facilities, the hotel provides a comfortable, pleasant atmosphere for leisure, business, or both. Enjoy a hearty meal at Pavilion, relax with a coffee in The Lounge, get active in our GYM, or just enjoy the outdoors in our courtyard and surroundings.

📍 333 Panwen Road, Qingpu District, Shanghai

🚶 15-minute walking to Zhuguang Road Station of Line 17



### Novotel Suites Shanghai Hongqiao ★★★★★

Located in Hongqiao Hub, Novotel Suites Shanghai Hongqiao is 2.3km from the National Exhibition Center and offers easy access to Shanghai Hongqiao International Airport and Shanghai Hongqiao Railway Station. It is also near the dining, shopping and entertainment areas. The hotel offers 162 duplex suites featuring living and dining rooms as well as 40 apartments complete with full kitchens. Facilities include a restaurant, gym, public laundry room and function spaces.

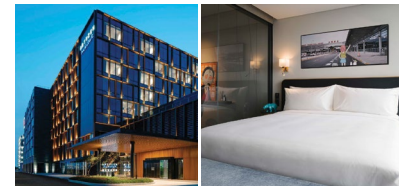
📍 1583 Huqingping Road, Qingpu District, Shanghai



### Hyatt Place Shanghai New Hongqiao ★★★★★

Located in the west of Shanghai, Hyatt Place Shanghai New Hongqiao is a short drive from the National Exhibition and Convention Center, Shanghai Hongqiao Railway Station and Hongqiao International Airport, providing modern, convenient accommodation for any traveler.

📍 2799 Huqingping Road, Qingpu District, Shanghai



### Artyzen Habitat Hongqiao Shanghai ★★★★★

Designed for both business and leisure travel, the hotel is ideally situated in Hongqiao Airport and National Convention Center, one of the city's most popular locales. The facilities and services provided ensure a pleasant stay for guests. To name a few of the property's facilities, there are free Wi-Fi in all rooms, 24-hour security, convenience store, daily housekeeping, gift/souvenir shop

📍 3999-5 Hongxin Road, Minhang District, Shanghai

🚶 5-minute walking to Ziteng Road Station of Line 10



### Holiday Inn Shanghai West ★★★★★

The hotel is located near the Metro Line 2's Xujing station and a ten-minute drive from Hongqiao International Airport under normal traffic condition. The Holiday Inn has contemporarily designed guest rooms which feature high speed broadband and wireless internet access, LCD TVs with satellite channels, international direct dial phones and voicemail, in room safes, hairdryers, mini bars

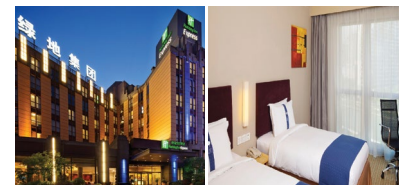
📍 2000 Huqingping Road, Shanghai



### Yuloon Hotel ★★★★★

The hotel is a Baroque style building designed according to the standard of a five-star business hotel which boasts of 327 deluxe guestrooms, several restaurants serving varied cuisines, a multifunctional banqueting hall with a capacity of over 300 guests, meeting rooms of different styles, Riverside Lounge and many other first-rate facilities.

📍 6699 Zhongchun Road, Minhang District, Shanghai



### Express by Holiday Inn Putuo Shanghai ★★★★★

The Hotel is a business hotel situated in the junction of the Putuo, Jing'an, and Changning Districts which takes a ten-minute drive from the train station, 20-minute from the Hongqiao Airport and 55-minute from Pudong International Airport. It is adjacent to Jing'an Temple and Zhongshan Park commercial area, Suzhou Creek and has easy access to Shanghai's shopping center and top attractions.

📍 843 West Guangfu Road, Putuo District, Shanghai

🚶 10-minute walking to Longde Road Station of Line 11 and 13





## Shanghai Disneyland Resort

📍 Huangzhao Rd, Chuanshaxinzen, Pudong New Area [www.shanghaidisneyresort.com/en/](http://www.shanghaidisneyresort.com/en/)

Shanghai Disney Resort is a themed resort in Pudong, Shanghai, China. It is the first Disney park resort in mainland China and the second in Greater China, after the Hong Kong Disneyland Resort. The resort opened on June 16, 2016, so this is a brand new attraction in Shanghai.



## The Bund

📍 Zhongshan East 1st Road, Huangpu Qu

The Bund is a mile-long stretch of waterfront promenade along the Huangpu River. To the west of this stretch stand 52 buildings of various architectural styles, including Gothic, baroque, and neoclassical styles. It is often referred to as "the museum of buildings". The best way to appreciate the buildings is to have a walk along the Bund. Roaming among the architectural complexes, you'll have a better understanding of the century-long charm of this city.



## Nanjing Road

📍 Nanjing Road Pedestrian Street, Nanjing Road, Huangpu Qu

Nanjing Road is considered to be the 'No. 1 commercial street in China', which has been a landmark for this city for a long time. Here, you could purchase everything wanted, spanning from special and cheap souvenirs to the luxurious world famous brands.



## Qibao Old Street

📍 Caobao, near Qixin Road, Minghang District

Qibao Old Street located in Qibao Town, Minghang District, has undoubtedly preserved the old look of Qibao Ancient Town in the Jiangnan region. Qibao Old Street carries historical and cultural memories. It is the best choice of cultural exploration and leisure experience. Linger among "Old Trades", "Cricket House" and "Miniature Museum" on the street style, you can enjoy the cultural charm of ancient times and experience special taverns and teahouses and taste diversified special snacks.



## MacroJoint Creative Culture Park

📍 No. 398, Lianming Road, Minghang District

MacroJoint Creative Culture Park is a cultural and creative park transformed from Shanghai's first textile mill into a full-scale experiential arts and crafts theme park. You can come to learn tradesmanship and listen to ingenious stores.



## Laowai Street

📍 Lane 3338, Hongmei Road  
<http://www.laowaijie.com/>

Laowai Street with a total length of more than 400 meters and is one of Shanghai's most popular hubs for Western and international cuisine. It is a car-free street of bars and restaurants where you can enjoy cuisine from Italy, Germany, France, Thailand, India and a dozen other nations.





## WHERE TO EAT IN SHANGHAI

### Yang's Dumpling 小杨生煎馆

📍 Huangpuhui, 269 Wujiang Road, Jing'an District 🌐 [www.xysjg.com](http://www.xysjg.com)

It is a small but popular fried dumpling shop serving pan fried pork bun or Sheng jian bao, a Shanghainese Chinese dish with secret recipe. They have over 20 locations in Shanghai and are opening another more all the time.



### Grandma's Home 外婆家

📍 818 Nanjing West Road, Jing'an District 🌐 [www.waipojia.com](http://www.waipojia.com)

All the dishes offered here are very typical, home-cooked style Chinese dishes.



### Old Jesse Restaurant 老吉士酒家

📍 41 Tianping Lu Road, Xuhui District

This cramped little restaurant is widely recognised as the best Shanghainese restaurant. Many Shanghainese bring visitors for a taste of old school Shanghainese food there.



### Jia Jia Tangbao 佳家汤包

📍 90 Huanghe Lu, near Fengyang Lu

Jia Jia Tangbao is an institution for Shanghai's own steamed soup dumpling, the xiaolongbao. Hole-in-the-wall location, plastic-stool ambiance, long lines, and an impeccable reputation for their made-to-order soup dumplings. If you want an interesting variation, try the xiaolongbao with the egg yolk.



### Ye Olde Station Restaurant 上海老站

📍 201 Caoxi N Rd, XuJiaHui, Xuhui Qu, Shanghai Shi, China, 200000

Formerly known as the Virgin Mary Convent, the restaurant is suited in a church building with over 90 years history. Enjoying awarded Shanghai local cuisine surrounded by traditional architecture and decoration is surely a special dining experience.



### THE TEN 十尚坊

📍 No. 1001, Longming Road, Minhang District

THE TEN leisure and catering street consists of ten buildings with unique characteristics and pleasant leisure and entertainment atmosphere, mostly a variety of special restaurants could be found.





## TOP 10 MUST EAT & DRINK IN SHANGHAI



Roast Duck 烤鸭



Fried Mantou 生煎馒头



Steamed Buns 小笼包



Yangchun Noodles 阳春面



Dongpo Meat 东坡肉



Tofu Pudding 豆腐花



Chinese Tea 中国茶



Niangao 年糕



Chinese Herbal Tea 凉茶



Dumplings Coated in Mashed Beans 擂沙汤圆

## SOME INTERESTING CHINESE CULTURE

### Chopsticks

Between bites, keep your chopsticks together and place them horizontally on your plate or across the top of your bowl. Never stand chopsticks upright in your rice bowl: this is considered a morbid gesture.



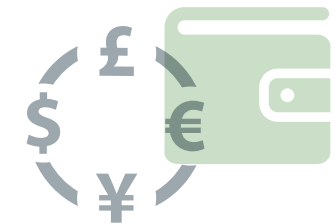
### Color

Color in Chinese culture refers to certain values, like which colors are considered auspicious or inauspicious. Red, corresponding with fire, symbolizes good fortune and joy. Red is found everywhere during Chinese New Year and other holidays and family gatherings.



### Bargain

Bargaining is acceptable in most Chinese stores, except in the supermarket or some shopping malls in which the goods have clear fixed prices and the staff is not allowed to grant discretionary markdowns. Try bargaining and you may get a great price reduction and enjoy the fun and pleasure of shopping.



## Useful Phrase

General		
Chinese	English	Putonghua
你好吗?	How are you?	nǐ hǎo ma?
早安	Good morning	zǎo ān
午安	Good afternoon	wǔ ān
晚安	Good night	wǎn ān
谢谢	Thank you	xiè xie
是/不是	Yes / No	shì / bú shì
国家会展中心 (上海)	National Exhibition & Convention Center (Shanghai)	guó jiā huì zhǎn zhōng xīn shàng hǎi
打的	Take taxi	dǎ dī
公车	Bus	gōng chē
地铁	Metro	dì tiě
船	Ferry	chuán
多少钱	How much is it?	duō shǎo qián
便宜一点	Cheaper	pián yi yī diǎn
洗手间	Toilet	xǐ shǒu jiān

## Useful Telephone Number

Emergency Numbers		Questions & Complaints	
Police	110	Complaints about Goods' Qualities	12315
First-aid Ambulance	120	Complaints about Prices	12358
Fire	119	Post Code Information	184
Traffic Accidents	122	Weather Forecast	12121
SOS in Water	12395	Phone Directory	114
		Comprehensive Information	12580 / 118114
		Railway Information	12306
		Civil Aviation	950137

## Useful Phrase

Restaurant		
Chinese	English	Putonghua
点菜	Order, please	diǎn cài
菜单	Menu	cǎi dān
请结帐	Check, please	qǐng jié zhàng
请给收据	Receipt, please	qǐng gěi shōu jù
水	Water	shuǐ
茶	Tea	chá
咖啡	Coffee	kā fēi
牛奶	Milk	niú nǎi
奶油	Cream	nǎi yóu
糖	Sugar	táng
盐	Salt	yán
胡椒粉	Pepper	hú jiāo fěn
面包	Bread	miàn bāo
汤	Soup	tāng
菜	Vegetable	cài
海鲜	Seafood	hǎi xiān
牛肉	Beef	niú ròu
鸡肉	Chicken	jī ròu
猪肉	Pork	zhū ròu
羊肉	Lamb	yáng ròu
素菜	Vegetarian	sù cài
土豆	Potato	tǔ dòu
米饭	Rice	mǐ fàn
面条	Noodles	miàn tiáo
甜	Sweet	tián
酸	Sour	suān
苦	Bitter	kǔ
辣	Spicy	là

- End -



## Contact

### **Messe Frankfurt (HK) Ltd**

35/F, China Resources Building

26 Harbour Road, Wanchai, Hong Kong

Tel : +852 2802 7728

Fax : +852 2519 6079

Email : [auto@hongkong.messefrankfurt.com](mailto:auto@hongkong.messefrankfurt.com)